

Energy Source Scramble

Reinforce students' knowledge of different power sources.

1. On the backs of eight pieces of thick paper or poster board, write the names of energy sources.

On the other side, list the following facts about that energy source.



2. Put these posters up around the room.

3. Make as many slips of paper as you have students and write the name of one energy source on each one, or use the cards on the next pages. Have each student take an "energy card," but not tell anyone which energy source they have.



4. Explain that they are to read the posters and find the energy source description that matches their energy source, and then stand by it silently.

Remind them not to talk about their energy source!

Oil I'm nonrenewable. I'm a fossil fuel. I'm mostly used to make gasoline. It is necessary to drill into the earth to find me.

Coal I'm nonrenewable. I'm a fossil fuel. I'm mostly used to make electricity. I produce reliable power that is nearly always available.

Natural Gas I'm nonrenewable. I'm the cleanest fossil fuel. I'm mostly used to provide heat for buildings. I can be expensive to use for generating electricity.

Hydropower I'm renewable. I do not create air pollution. I use falling water to make electricity. There are only so many places where I can be developed.

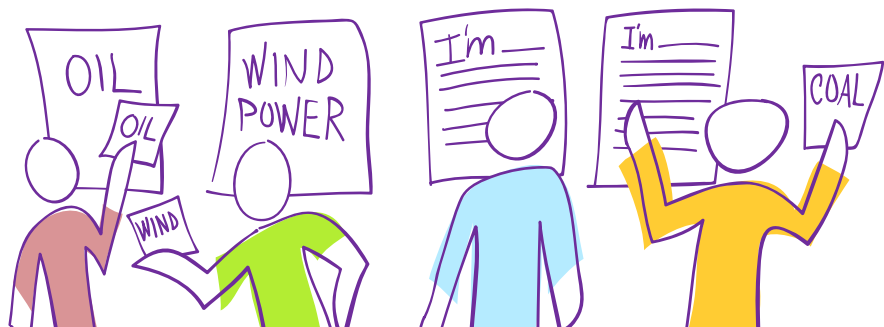
Nuclear Fission I'm nonrenewable. I'm used to make electricity. I create radioactive waste material. I do not create air pollution.

Wind Power I'm renewable. I do not create air pollution. I've been used for thousands of years to power boats, pump water and grind grain. I need lots of land.

Solar Energy I'm renewable. I'm used to heat air or water in buildings. I'm used to provide electricity on spacecraft and in places where there is no other electricity. I only work when the sun shines.

Biomass I'm renewable. I can be used to make electricity. I can turn garbage or plants into fuels. I need to be sorted before I'm burned to make electricity.

5. When all the students have chosen, turn over the posters to reveal the energy source and check the students' slips of paper.

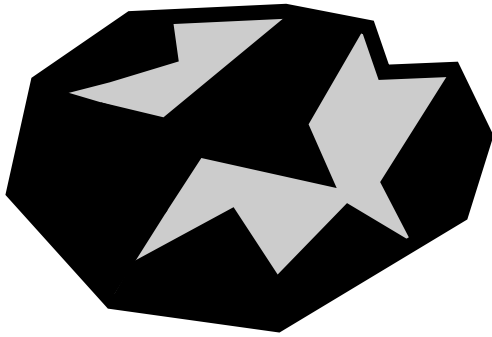


Energy Source Scramble: Cards

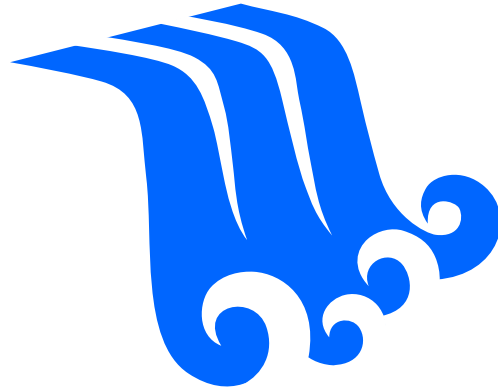
WHICH POWER SOURCE ARE YOU?

PAGE 2

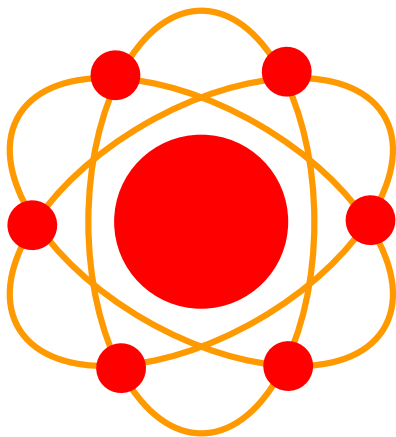
You can cut out these cards and use them for the Energy Source Scramble.



COAL



HYDROPOWER



NUCLEAR FISSION



WIND POWER

Energy Source Scramble: Cards

WHICH POWER SOURCE ARE YOU?

PAGE 3

You can cut out these cards and use them for the Energy Source Scramble.

